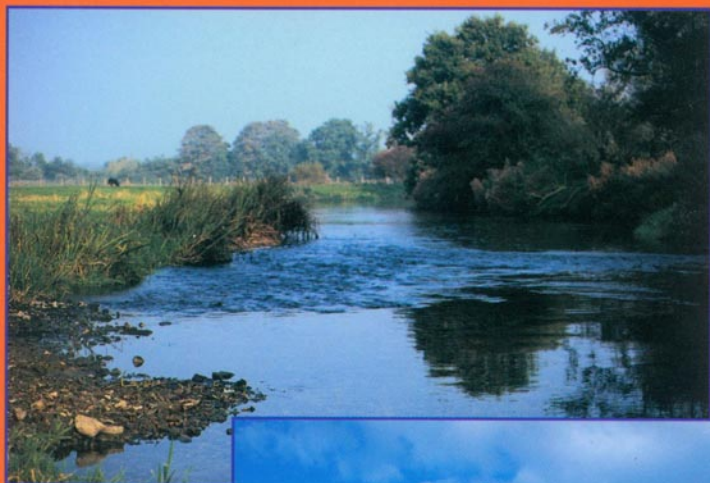


CPRE Norfolk Awards



Campaign to Protect
Rural England
NORFOLK

1980 to 2004

BOSTON SQUARE SENSORY GARDEN, HUNSTANTON



This new community garden is very imaginative in its architectural design and planting. It provides many sensory experiences especially for those with sight and hearing disabilities. The landscaping and planting reflect the local ecology from beach to cliff top.